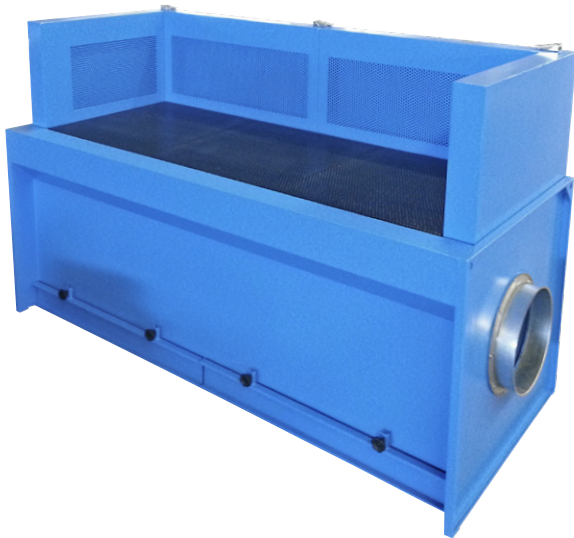


ZB POL JET

DOWNDRAFT TABLES WITH CARTRIDGE AND AIR COMPRESSED CLEANING



USE

- Blowing parts cleaning operations
- Mechanical processing operations: grinding, deburring
- Powder product weighing operations
- Operations with dusty substances
- Operations to regenerate toner cartridges for printers

FEATURES

- Sturdy construction with electro-welded 2-3 mm sheet metal
- Sturdy perforated sheet top
- Available with scratch-resistant perforated polypropylene top
- Coarse parts collection tray
- High-performance filter cartridge with counter-current compressed air cleaning
- Removable side and front walls
- Available in version for centralized plants (ZB/POL/JET/C) or already coupled to fan (ZB/POL/JET)
- Available in ATEX Ex II 3D version

STANDARD SUPPLY

- Removable side walls and front wall
- Automatic compressed air cleaning
- Fan (only in ZB/POL/JET models)
- Collection drawer

TECHNICAL DATA

ZB/POL/JET [Suction benches for powders (5–30 µm UNI 11304-1), with cartridge and compressed air cleaning. Complete with fan]

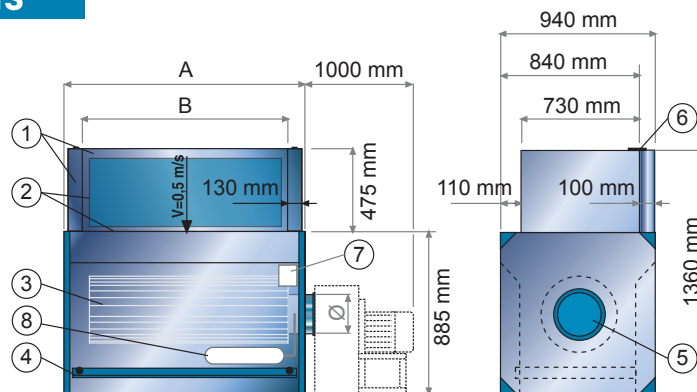
MODEL	FILTERING SURFACE m ²	CARTRIDGE HEIGHT (Ø 570 MM) mm	AIR FLOW RATE m ³ /h	FAN	POWER kW/rpm	ΔP AVAILABLE mm H ₂ O	MAX LOAD Kg/m ²	A mm	B mm
ZB/POL/JET1	33,5	700	3600	M 404	4/2800	95	150	1210	950
ZB/POL/JET15	57	1300	5200	M 452	5,5/2800	90	150	1760	1500
ZB/POL/JET2	77	1700	6300	M 454	7,5/2800	105	150	2160	1900

ZB/POL/JET/C [Suction benches for powders (5–30 µm UNI 11304-1), with cartridge and compressed air cleaning. For centralized plants, without fan]

MODEL	Ø IN mm	FILTERING SURFACE m ²	CARTRIDGE HEIGHT (Ø 570 MM) mm	MINIMUM RECOMMENDED AIR FLOW RATE m ³ /h	ΔP STATIC mm H ₂ O	MAX LOAD Kg/m ²	A mm	B mm
ZB/POL/JET1C	250	33,5	700	3600	100	150	1210	950
ZB/POL/JET15C	300	57	1300	5200	100	150	1760	1500
ZB/POL/JET2C	350	77	1700	6300	100	150	2160	1900

COMPONENTS AND DIMENSIONS

1. Removable suction walls
2. Suction grilles
3. Cartridge filter
4. Collection drawer
5. Suction inlet
6. Wall fixing clip
7. Cleaning management timer
8. Compressed air tank



OPTIONAL

- **[ZB/POL/ATEX]** Atex Ex II 3D version
- **[ZB/POL]** Bench execution
- **[CUP/LEXAN]** Lexan upper dome
- **[CUP/PO]** Lexan upper dome and sliding front door
- **[GRL]** Wooden grid, size of strips 35x30 mm
- **[APE/LAT]** Hinged side walls for side opening
- **[PPF]** Anti-scratch perforated polypropylene top (from 1000 mm to 3000 mm)

SPARE PARTS

- **[CAR]** Aluminised non-woven fabric cartridge, Ø 570 mm, (ht. from 700 mm to 1700 mm)
- **[P/ZB]** Perforated sheet top (from 1 to 2 meters)